



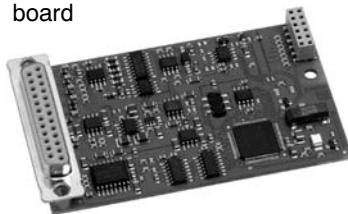
# AED9101C-Z2/22

Basic device with  
AD103C

AED9101C-Z2/22  
basic device



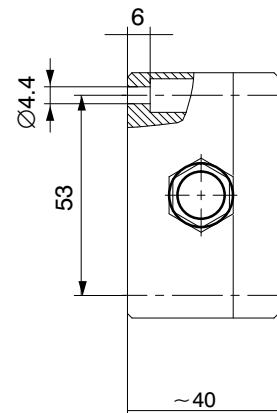
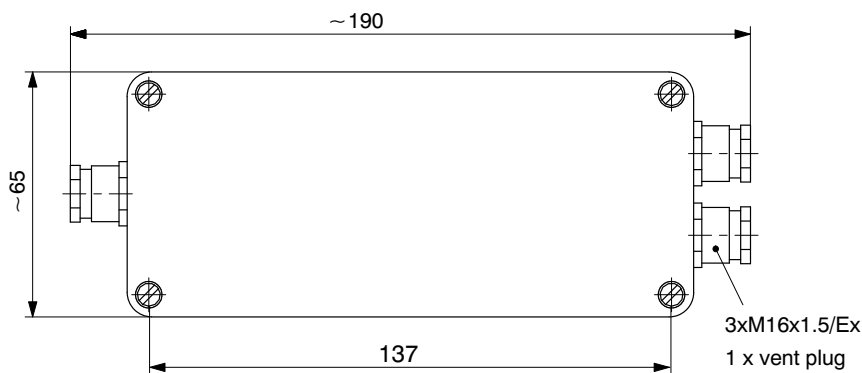
AD103C amplifier  
board



## Special features

- For static and dynamic applications
- RS-232, RS-422 or RS-485 interfaces
- ATEX95 Ex II 3GD X
- For use in Zone 2 or Zone 22
- Test report available for 10,000 digits, class III
- 6 ... 30 V supply voltage range
- Diagnostic bus for analysis and additional display

Dimensions (in mm; 1 mm = 0.03937 inches)



## Specifications

Type		AED9101C-Z2/22
Measuring amplifier		AD103C
Measurement signal input	mV/V	±3, nominal ±2
Transducer connection:		
SG transducer (full bridge)	Ω	≥80 ... 4000
Transducer connection type		Six-wire circuit
Length of transducer cable	m	≤100
Bridge excitation voltage	V <sub>DC</sub>	5
Interfaces:		
Hardware (selected by slide-switch)		RS-232, RS-422, RS-485
Length of communications cable RS-232	m	≤15
RS-422, RS-485	m	≤1000
Max. number of bus nodes (RS-485)		32
Diagnostic bus (2-wire RS-485)		
Protocol		ASCII/binary
Baud rate, max.	kBits/s	38.4
Node address		0 ... 89
Length of communications cable, max.	m	1000
Trigger input		
Input voltage range, LOW	V	0 ... 1
Input voltage range, HIGH	V	2 ... 30
Input current at High level = 30 V	mA	<3
Power supply:		
Supply voltage	V <sub>DC</sub>	6 ... 30
Current consumption (without load cell)	mA	≤120 <sup>1)</sup>
Temperature range:		
Nominal (rated) temperature	°C	-20 ... +40
Storage temperature		-40 ... +85
Dimensions	mm	190 x 65 x 40
Materials		
Housing		Cast aluminum alloy, AISi ENAC-4430 DIN EN 1706, unpainted
Screws		rustfree
Screwed cable glands		
EMC/Ex bolted connections		3 x M16x1.5 50.616M/EMC/EX
Vent plugs		1 x M16x1.5 10.615M/G/EX
Weight, approx.	g	440 (without AD103C)
Degree of protection per EN 60529 (IEC 529)		IP65

1) Current consumption ≤ 120 mA +  $\frac{\text{Excitation voltage } U_B = 5 \text{ V}}{\text{Bridge resistance } R_B}$

## Product numbers

1-AED9101C-Z2/22 = AED9101C basic device with AD103C amplifier board

## Accessories, to be ordered separately

Legal-for-trade digital scale display (see separate data sheet)

1-DWS2103

## Documentation

1-FIT-AED-DOC (CD-ROM with operating manual and AED panel program AED\_Panel32)

Modifications reserved.

All details describe our products in general form only. They are not to be understood as express warranty and do not constitute any liability whatsoever.

## Hottinger Baldwin Messtechnik GmbH

Im Tiefen See 45 · 64293 Darmstadt · Germany  
Tel. +49 6151 803-0 · Fax: +49 6151 803-9100  
Email: [info@hbm.com](mailto:info@hbm.com) · [www.hbm.com](http://www.hbm.com)

measure and predict with confidence

